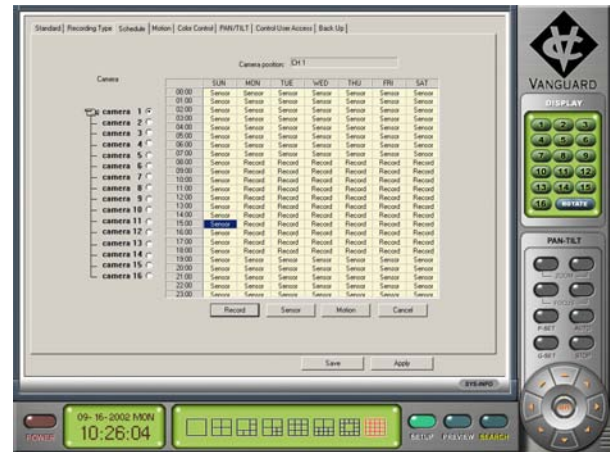




# VELTEK

FAQs

# VANGUARD



## FREQUENTLY ASKED QUESTIONS

### 1. What is the “Watch Dog Function”?

When the Watch Dog Cable is connected and the Watch Dog Function is turned on in the Set-up/Standard menu, the **VANGUARD** will automatically “reboot” in the event of a power failure or operating system instability. This is done without the assistance of a system operator to maximize the ability to have the **VANGUARD** in operation.

### 2. What are the three compression methods and when should I use what compression?

The **VANGUARD** allows the user to select from a.) MJPEG, a high quality but low compression method that is best used in standalone applications; b.) MPEG-4, very good picture quality and excellent standardized compression method making it a good choice for LAN systems; or, c.) H.263 (sometimes referred to as MPEG-4+) which has the greatest compression with good video making it an optimal choice for modem or dial-up applications.

### 3. How can I back-up the video I have recorded?

The recorded video is stored on the **VANGUARD**'s internal hard drives and can be backed up to a number of standard storage devices including: remote system servers, removable hard drives, Zip® or Jazz® Drives, DVD's and CD's. The standard **VANGUARD** turnkey system includes a CD-RW drive.

### 4. Can I make a hard copy of a specific frame or event?

With the **VANGUARD** you can print a still frame image directly from the search screen or you can “burn” a AVI file of a specific event directly to the **VANGUARD**'s CD-RW drive. The AVI file you have created can then be played on any AVI reader program including Windows Media Player™.

### 5. How does Motion Detection work with the VANGUARD?

Internal motion detection can be activated from the Set-up Menu/ Motion tab. This function allows the operator to highlight one or more specific areas to detect motion. Each highlighted area is adjustable for sensitivity, size and location, thus eliminating alarms or recording due to unwanted motion. An external motion detector can also be connected to the **VANGUARD** via the external alarm sensors.

### 6. What operating system does the VANGUARD use?

The standard **VANGUARD** utilizes the Windows® 2000 Operating Systems. Upon request, however, the **VANGUARD** can be shipped customized with Windows® 98, ME, XP operating systems.

### 7. Can the VANGUARD be accessed over the Internet?

**VANGUARD** servers and clients can be accessed over the Internet using standard TCP/IP protocol.

**8. Can I customize the recording rate by camera?**

Yes, each video channel (camera) on a **VANGUARD** system is adjustable from 1 fps to 30 fps recording rate.

**9. How long can I record Pre- and Post- Alarm events?**

The **VANGUARD** can record up to 90 seconds pre-alarm and 90 seconds post-alarm per alarm event, in addition to the recording settings already in use.

**10. Can a PTZ camera be controlled from the VANGUARD?**

PTZ cameras and remote position devices can be controlled directly from the **VANGUARD** GUI via mouse and keyboard. The **VANGUARD** can also work in tandem with standard PTZ joystick controllers for redundant or remote applications.

**11. Can I set a schedule for recording?**

With the **VANGUARD** each camera can be set to a recording and frame rate schedule based on the time of day and day of the week. In addition, schedules can be set-up and integrated for sensor activation and motion detection.

**12. How long can I record for each compression method?**

Hard drive usage tables are available in the 2003 **VELTEK** Catalog, the **VELTEK** website at [www.veltekccctv.com](http://www.veltekccctv.com), or by asking your sales representative.

**13. Can I use my existing cameras on the VANGUARD System?**

The **VANGUARD** can be used with any composite signal CCTV video camera, however we do encourage you to re-evaluate your current cameras to ensure that optimal performance. We highly recommend using **VELTEK** cameras when possible.

**14. Can I control the picture quality and color for each camera independently?**

Independent control of hue, saturation, brightness and contrast is available for each video channel in the Set-up/ Color Menu tab.

**15. Can I set-up individual passwords and controls by user?**

Yes, the **VANGUARD** allows for access by user via passwords. Further, via password level designations, an individual user can be given specific access to View only, View/Edit, or View/ Edit /Delete.

**16. Where can I get answers to my specific questions regarding the VANGUARD system?**

Answers to your specific questions can be obtained by contacting **VELTEK** directly by:

E-MAIL:	<a href="mailto:sales@veltekccctv.com">sales@veltekccctv.com</a>
WEBSITE:	<a href="http://www.veltekccctv.com">www.veltekccctv.com</a>
TELEPHONE:	TOLL-FREE: 888-333-4582, or 508-845-9888
FAX:	508-845-9888